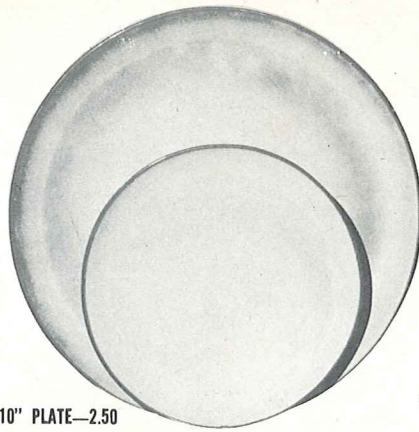


\*4K—BUTTER DISH—3.50



6F—10" PLATE—2.50

6G—7" PLATE—1.50



\*6B—SUGAR WITH LID—2.25

\*6AB—CREAM & SUGAR SET—4.00



\*6A—9 OZ. CREAMER—1.75

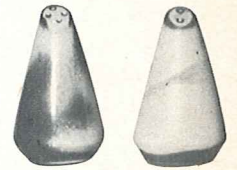


\*6V—2 1/2 QT. BAKER—6.50



\*\*6C—CUP—1.50

6E—5" WELLED SAUCER—1.25



\*6H—SALT & PEPPER—2.50



\*5LC—6 OZ. JUICE—1.25



\*5L—12 OZ. TUMBLER—1.50



\*6VS—1 1/2 QT. BAKER—5.00



\*6T—6 CUP TEAPOT—4.50



\*81—1 QT. PITCHER—3.00



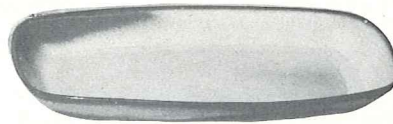
\*80—2 QT. PITCHER—5.00



\*6J—2 CUP TEAPOT—3.00



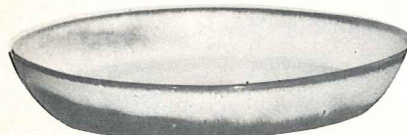
\*6U—18 OZ. BAKER FOR TWO—3.50  
A COVERED CANDY DISH



\*5QS—13" STEAK PLATE (SHALLOW PLATTER)—2.50

\*6P—11" STEAK PLATE—2.00

\*5PS—9" TRAY—1.50



\*91—10" BAKING DISH—2.50



\*BP—6 OZ. BEAN POT  
OR CUSTARD—1.00

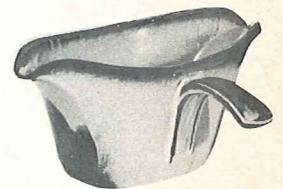


\*BP—6 OZ. BEAN POT  
OR CUSTARD/WITH LID—2.00



\*\*6X—14 OZ. CHILI SOUP—1.25

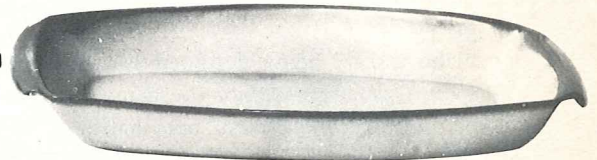
6XS—10 OZ. FRUIT—1.00



\*6S—TWO SPOUT GRAVY—3.00

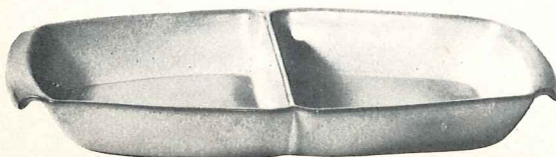


\*6N—1 QT. BOWL—2.50

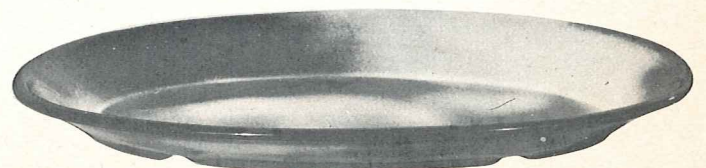


5P—17" DEEP PLATTER—10.00

\*5Q—13" DEEP PLATTER—4.00



\*5QD—13" DIVIDED BOWL—4.00



\*TP—17" OVAL PLATTER—10.00

THIS PAGE AVAILABLE IN PRAIRIE GREEN, WOODLAND MOSS AND WHITE SAND EXCEPT WHERE NOTED

\* AVAILABLE IN ALL COLORS \*\* AVAILABLE IN BLACK & FLAME ALSO. — ADD 50% FOR FLAME

SIZES ARE APPROXIMATE AND MAY VARY SLIGHTLY.